

Secoroc Rock Drilling Tools

RAISEBORING DRILL PIPES

Product Catalogue

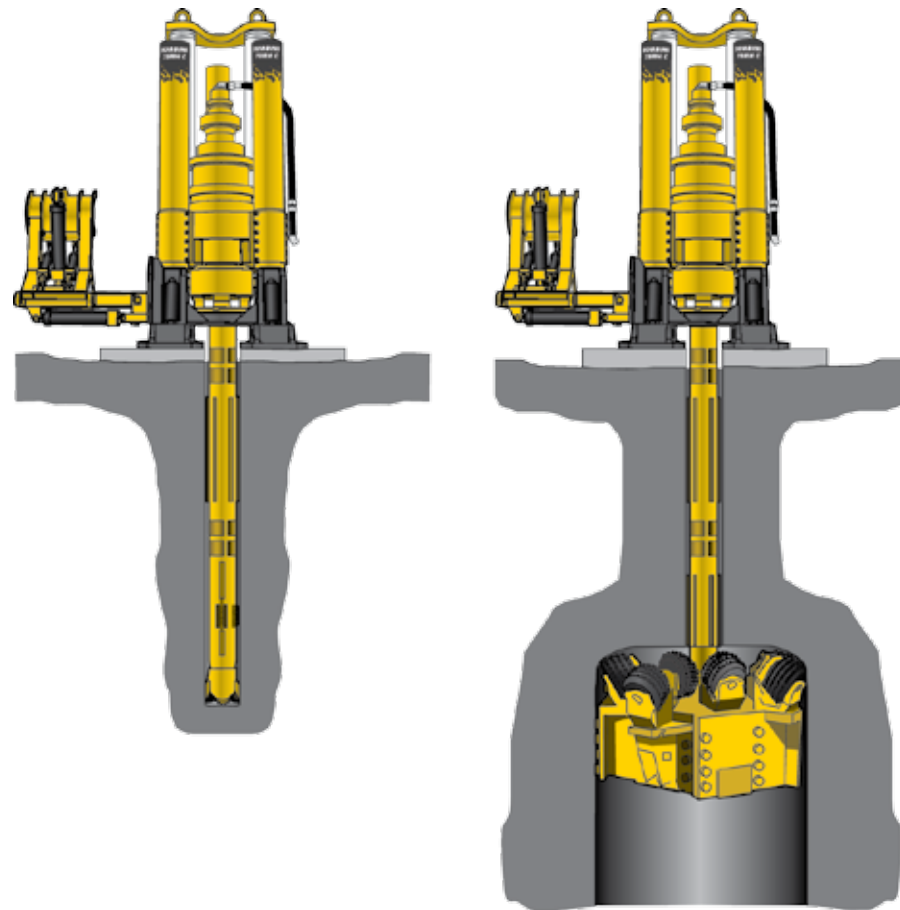


Introducing Raiseboring drill string components

Atlas Copco Secoroc has a long history in Raiseboring that finds its roots in the Robbins Raiseboring Company, Ingersoll Rand Raiseboring and BHMT. Now introducing a full product offering from the Raiseboring machine, through the Raiseboring consumables, including the Raisebore drillstring.

Atlas Copco Raiseboring Drillstring components are designed for each individual Raiseboring machine. Many of these machines are Robbins or IR machines designed and manufactured by Atlas Copco. Atlas Copco Secoroc Raiseboring Drillstring components are designed for durability and economy.

To complement the design and manufacture of their Raiseboring Drill components, Atlas Copco has worldwide coverage, with service just a phone call away. With Atlas Copco comes constant product improvements along with the backing of Atlas Copco and the peace of mind that comes with it.



Raiseboring Drill Pipe

Atlas Copco Secoroc Raiseboring Drill Pipes are designed and manufactured for fatigue resistance with the use of a radiused root thread instead of the industry standard flat bottom root thread design.



Difference between the radiused root thread (right) and the standard thread (left).

In addition, the use of shot peening in critical areas also improves the fatigue life of the pipe and other components. The combination of the radiused root thread and the shot peening of critical areas is a step above the industry standard. See the attached table for our standard offering.



Shot peened areas highlighted in red.



Shot peening illustration

A Complete Raiseboring System



Raiseboring Drill Pipe Features & Benefits

Features:	Benefits:
Atlas Copco supplies the entire raiseboring offering	One stop shop
DI22 with radius root thread profile	Improved thread fatigue life
Shot peening threads and wrench flats	Improved crack resistance
Standard strength & High strength material offering	Wide product offering assortment

Reference terms	
OD	Outer diameter / Nominal pipe size
HS	Hole size / Pilot bit size
S/S	Shoulder to Shoulder / Product length
F/F	Flat to Flat / Wrench measurement
FW	Flat width
ID	Inside diameter
ID1	Inside diameter / Small bore - Stepped ID
ID2	Inside diameter / Large boreBack - Stepped ID
GC	Gripper clearance / Rig Requirements
NRS	Non-rotating stabilizer

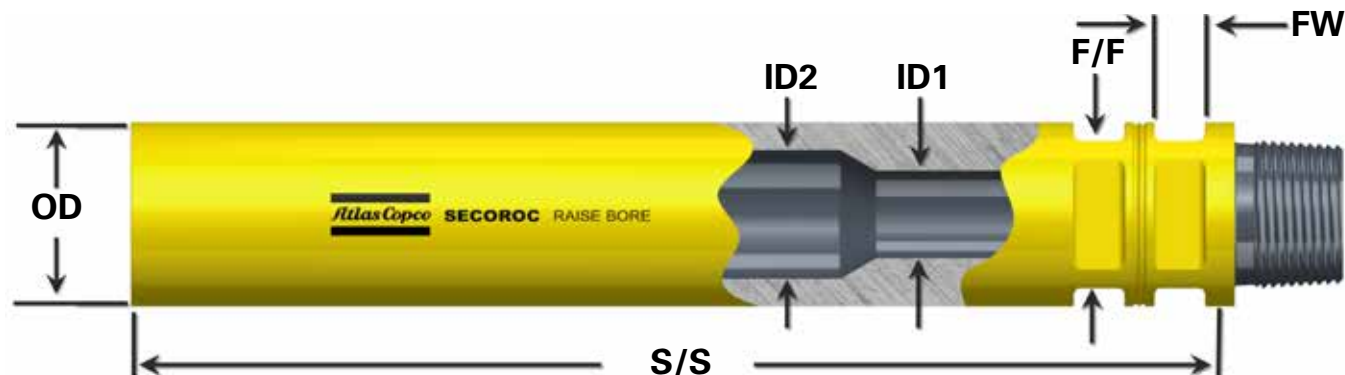
Drill Pipe product offering:

Product Number	Catalog Code	OD		S/S		Strength	Connection*	Weight		F/F		FW	
		in	mm	in	mm			lbs	kg	in	mm	in	mm
92010650	2R-203-0749-R2AA-BB,01-82	8	203	29-1/2	749	Standard	6-3/4 DI-22	251	114	7	178	2-3/4	70
92010634	2R-203-1219-R2AA-BB,01-82			48	1219			373	169				
92010701	2R-203-1524-R2AA-BB,01-82			60	1524			445	202				
92010866	2R-254-0914-R4AB-DB,01-82	10	254	36	914	Standard	8-1/4 DI-22	566	257	8	203	2-3/4	70
92010645	2R-254-1219-R4AB-DB,01-82			48	1219	Standard		710	322				
92010910	2R-254-1473-R4AB-DB,01-82			58	1473	Standard		818	371				
92010682	2R-254-1524-R4AB-DB,01-82			60	1524	Standard		853	387				
92010668	2R-254-1524-R4AW-DB,01-15			60	1524	High		853	387				
92010729	2R-286-0749-R7A0-FB,01-82	11-1/4	286	29-1/2	749	Standard	9-1/4 DI22-S	522	237	9	229	3	76
92010662	2R-286-1524-R6AC-FB,01-82			60	1524	Standard	9-1/4 DI-22	1067	484				
92010674	2R-286-1524-R6AW-FB,01-15			60	1524	High	9-1/4 DI-22	1067	484				
92010968	2R-327-1219-R9AD-HB,01-15	12-7/8	327	48	1219	High	10-1/2 DI-22	1146	520	10	254	3-1/2	89
92010675	2R-327-1524-R9AD-HB,01-15			60	1524			1530	694				
92010830	2R-334-1524-R8BF-HB,01-15	13-1/8	333	60	1524	High	10-1/8 DI-42	1550	703	10	254	3-1/2	89
92011201	2R-334-1524-R8BF-IB,01-15							1565	710				

Other wrench configurations are available upon request.

*Connection for Pin & Box

ID1:	4-3/4"	for 8" & 10" Drill Pipe and 5-716"
		for all larger sizes
ID2:	6"	for 8" Drill Pipe
	7"	for 11" O.D. Drill Pipe
	8"	for 11-1/4" O.D. Drill Pipe
	9"	for all larger sizes listed



Rib Stabilizer product offering:

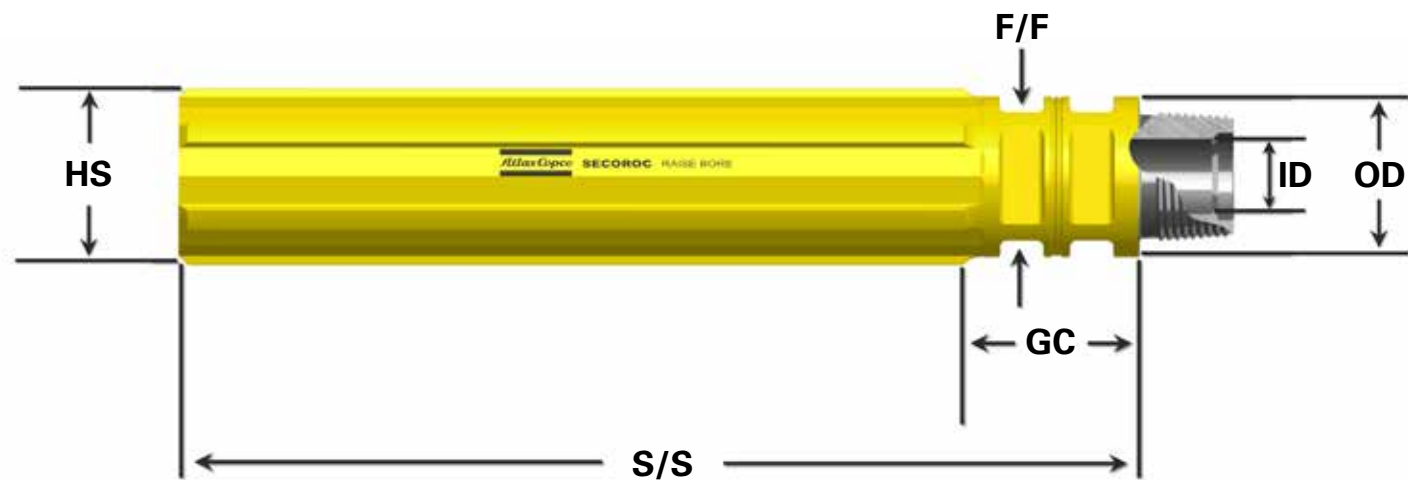
Product Number	Catalog Code	OD		HS		S/S		Connection*	ID		GC		F/F	
		in	mm	in	mm	in	mm		in	mm	in	mm	in	mm
92010654	3R-R2C-R2-0749-B1H-AA,15	8	203	9	228	29-1/2	749	6-3/4 DI-22	3 1/2	89	11	279	7	178
92010639	3R-R2C-R2-1219-B1H-AA,15			9	228	48	1219				11	279		
92010644	3R-R2C-R2-1219-B1H-AJ,15			9	228	48	1219				14-1/2	368		
92010860	3R-R2D-R2-1219-B1H-AA,15			9-7/8	251	48	1219				11	279		
92010658	3R-R4F-R4-1219-D1H-AB,15	10	254	11	254	48	1219	8-1/4 DI-22	4 3/4	114	11	279	8	203
92010649	3R-R4F-R4-1219-D1H-AJ,15					48	1473				14-1/2	368		
92010672	3R-R4F-R4-1524-D1H-AW,15					60	1524				11	279		
92010661	3R-R7I-R7-0749-F1H-AO,15	11-1/4	285	12-1/4	286	29-1/2	749	9-1/4 DI22-S	5-7/16	114	10-3/4	273	9	229
92010861	3R-R6I-R6-0914-F1H-AC,15					36	914	9-1/4 DI-22	4 3/4		11	279		
92010667	3R-R6I-R6-1524-F1H-AC,15					60	1524	9-1/4 DI-22	4 3/4		11	279		
92010967	3R-R9J-R9-1219-H1H-AD,15	12-7/8	327	13-3/4	349	48	1219	10-1/2 DI-22	5-7/16	138	20	508	10	254
92010680	3R-R9J-R9-1524-H1H-AD,15			13-3/4	349	60	1524				20	508		
92010833	3R-R9L-R9-1524-H1H-AD,15			15	381	60	1524				15-1/4	387		
92010862	3R-R8K-R8-1524-I1H-AE,15	13-1/8	333	13-3/4	349	60	1524	10-1/8 DI-42	5-7/16	138	15-1/4	387	10-1/2	268
92010863	3R-R8M-R8-1524-I1H-BF,15			15	381		1524							

Other wrench configurations are available upon request

See Drill Pipe chart for additional wrenching detail by referencing the OD size

All the listed Rib Stabilizers are manufactured using High Strength material

*Connection for Pin & Box



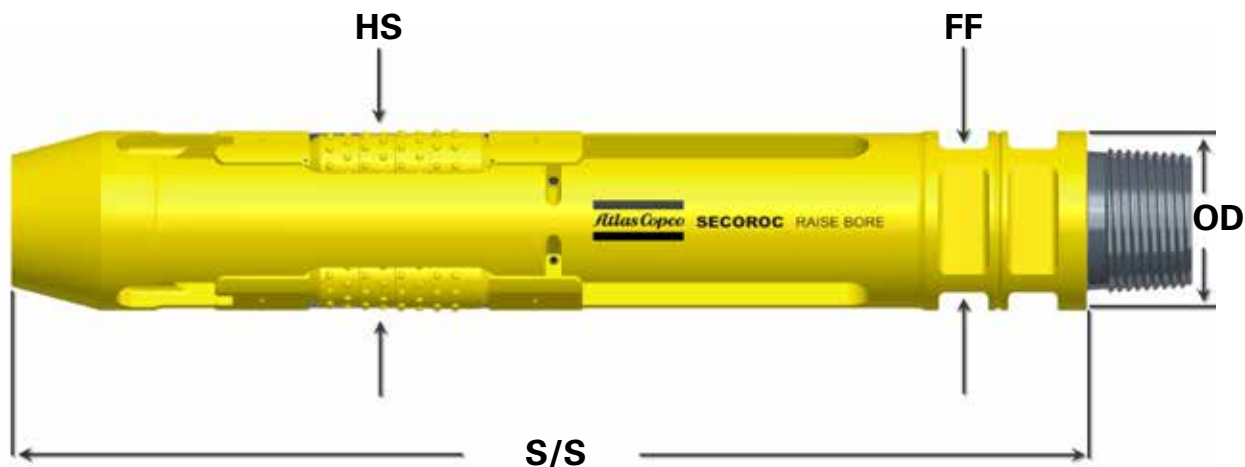
Roller Stabilizer product offering:

Product Number	Catalog Code	OD		HS		S/S		Connection		Weight (kg)	Float Valve*	F/F	
		in	mm	in	mm	in	mm	Pin	Box			in	mm
92010653	3R-17C-R2-0749-B1A-AA,82	8	203	9	228	29-1/2	749	6-3/4 DI-22	4-1/2 API-Reg	167	4R	7	178
92010643	3R-17C-R2-1016-B1A-AJ,82			9	228	40	1016		4-1/2 API-Reg	222			
92010638	3R-17C-R2-1219-B1A-AA,82			9	228	48	1219		4-1/2 API-Reg	268			
92010825	3R-18D-R2-0940-B1A-AA,82			9-7/8	251	37	940		6-5/8 API-Reg	250			
92010648	3R-18F-R4-1080-D1A-AJ,82	10	254	11	254	42-1/2	1080	8-1/4 DI-22	6-5/8 API-Reg	334	4R	8	203
92010657	3R-18F-R4-1219-D1A-AJ,82					48	1219			399			
92010671	3R-18F-R4-1524-D1A-AW,82					60	1524			510			
92010666	3R-18I-R6-1321-F1A-AO,82	11-1/4	285	12-1/4	286	52	1321	9-1/4 DI-22	6-5/8 API-Reg	528	4R	9	229
92011143	3R-18I-R6-1524-F1A-AC,82					60	1524			600			
92010679	3R-18J-R9-1219-H1B-AD,82	12-7/8	327	13-3/4	349	48	1219	10-1/2 DI-22	6-5/8 API-Reg	680	5F-6R	10	254
TBA	TBA			15	381				7-5/8 API-Reg	TBA			
TBA	TBA	13-1/8	333	15	381	48	1219	10-1/8 DI-42	7-5/8 API-Reg	TBA	5F-6R	10-1/2	268

Other wrench configurations are available upon request.

See Drill Pipe chart for additional wrenching detail by referencing the OD size

***Part is machined to accept a Float Valve but it is not included.**



Starter Pipes & Subs:

8" Nominal Size - 8.5" Pipe / Bushing Size

Product Number	Catalog Code	Type	S/S	Connection		F/F
				Box	Pin	
92010637	3R-17C-R2-0305-B2E-AA,82	Sub	12	4-1/2 API-Reg	6-3/4 DI-22	7
92010736	2R-216-0533-R2AA-BD,02-82	Pipe	21	6-3/4 DI-22		
92010973	3R-17C-R2-0610-B2E-AA,82	Sub	24	4-1/2 API-Reg		
92010652	3R-17C-R2-0749-B1E-AA,82	Sub	29-1/2	4-1/2 API-Reg		
92010651	2R-216-0749-R2AA-BC,01-82	Pipe	29-1/2	6-3/4 DI-22		
92010818	2R-216-0914-R2AA-BC,02-82	Pipe	36	6-3/4 DI-22		
92010642	3R-17C-R2-1016-B10E-AJ,82	Sub	40	4-1/2 API-Reg		
92010641	2R-216-1219-R2AJ-BC,10-82	Pipe	48	6-3/4 DI-22		
92010636	2R-216-1219-R2AA-BC,11-82	Pipe	48	6-3/4 DI-22		



10" Nominal Size - 9.5" Pipe / Bushing Size

Product Number	Catalog Code	Type	S/S	Connection		F/F
				Box	Pin	
92010656	3R-18E-R4-0305-D2E-AB,82	Sub	12	6-5/8 API-Reg	8-1/4 DI-22	8
92011145	2R-241-0508-R4AW-DD,02-82	Pipe	20	8-1/4 DI-22		
92010647	3R-18E-R4-1016-D11E-AJ,82	Sub	40	6-5/8 API-Reg		
92010816	3R-18E-R4-1219-D15E-AN,82	Sub	48	6-5/8 API-Reg		
92010646	2R-241-1219-R4AJ-DC,02-82	Pipe	48	8-1/4 DI-22		
92010655	2R-241-1219-R4AB-DC,15-82	Pipe	48	8-1/4 DI-22		
92010670	2R-241-1524-R4AW-DC,01-82	Pipe	60	8-1/4 DI-22		

11-1/4" Nominal Size - 11" Pipe / Bushing Size

Product Number	Catalog Code	Type	S/S	Connection		F/F
				Box	Pin	
92010960	3R-18G-R7-0600-F2E-AC,82	Sub	23-5/8	6-5/8 API-Reg	9-1/4 DI-22	9
92010659	2R-279-0749-R7AO-FD,02-82	Pipe	29-1/2	9-1/4 DI-22		
92010673	3R-18G-R6-0927-F2E-AW,82	Sub	36-1/2	6-5/8 API-Reg		
92010665	3R-18G-R6-1219-F16E-AO,82	Sub	48	6-5/8 API-Reg		
92010664	2R-279-1524-R6AJ-FC,12-82	Pipe	60	9-1/4 DI-22		

12-7/8" Nominal Size / 12.75" Pipe / Bushing Size

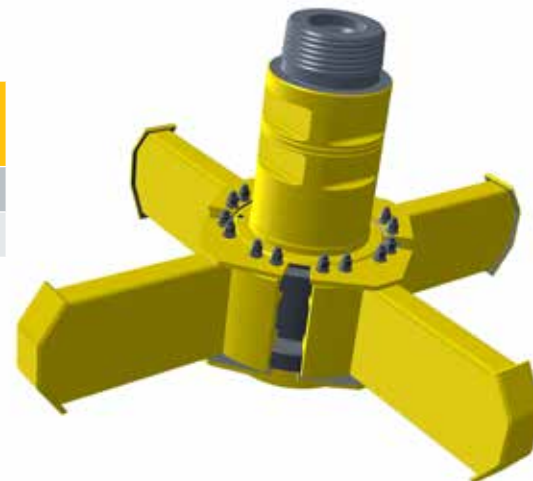
Product Number	Catalog Code	Type	S/S	Connection		F/F
				Box	Pin	
92010815	3R-181-R9-0762-H2E-AD,82	Sub	30	6-5/8 API-Reg	10-1/2 DI-22	10
92010676	2R-324-0762-R9AD-HD,02-82	Pipe	30	10-1/2 DI-22		
92010965	2R-324-1219-R9AD-HC,04-82	Pipe	48	10-1/2 DI-22		
92010678	3R-181-R9-1365-H2E-AD,82	Sub	53-3/4	6-5/8 API-Reg		
92010677	2R-324-1524-R9AD-HC,17-82	Pipe	60	10-1/2 DI-22		

13-1/8" Nominal Size

Product Number	Catalog Code	Type	S/S	Connection		F/F
				Box	Pin	
TBA	TBA	Sub	30	7-5/8 API-Reg	10-1/8 DI-42	10-1/2
TBA	TBA	Pipe	30	10-1/8 DI-42		
TBA	TBA	Pipe	60	10-1/8 DI-42		

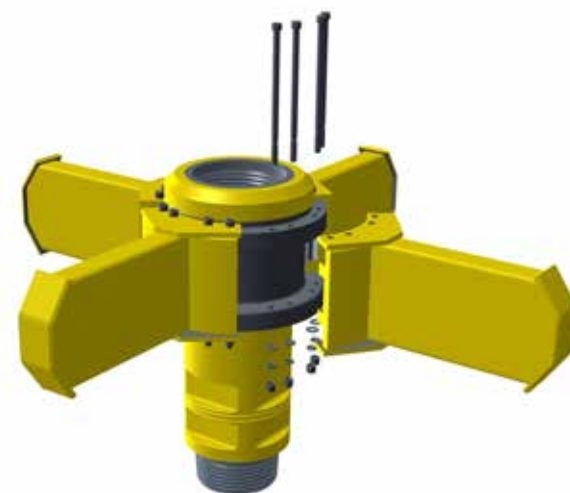
NRS: Complete Assemblies

Product Number	Catalog Code	OD	S/S	Connection*	Weight	Strength	Reamer Hole Size
92011006	3R-R2Q-R2-1219-B18K-CH,82	8	48	6-1/4 DI-22	342 Kg	Standard	750 MM
92011002	3R-R7U-R7-0750-F18K-AO,15	11-1/4	29-1/2	29-1/2 DI22-S	631 Kg	High	1.5 Meter



NRS: Hub & Body Only

Product Number	Catalog Code	OD	S/S	Connection*	Weight	Strength
92011055	9700-1844	8	48	6-1/4 DI-22	277 Kg	Standard
92011058	9700-1846	11-1/4	29-1/2	29-1/2 DI22-S	434 Kg	High



NRS: Wing Sets

Product Number	Catalog Code	Use with these NRS	Reamer Hole Size
92011102	9700-1851	92011055 / 92011006	500 MM
92011056	9700-1845	92011055 / 92011006	750 MM
92011059	9700-1847	92011058 / 92011002	1.5 Meter

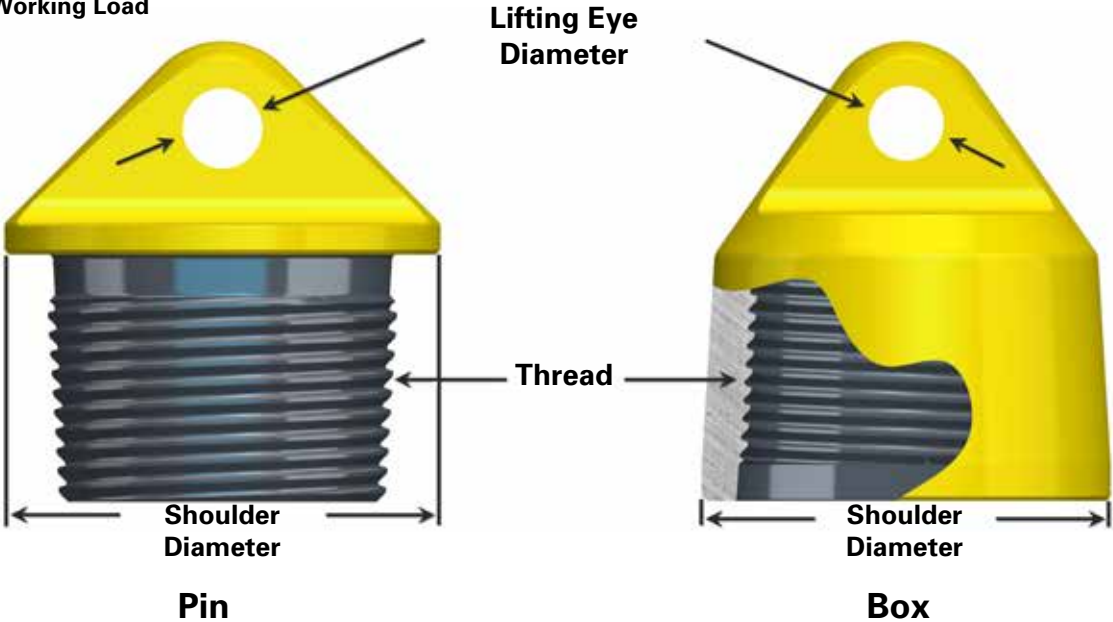
Other sizes are available upon request

Lift Bail product offering:

Product Number	Catalog Code	Shoulder	Thread	Pin/Box	Weight (kg) *	SWL ** Tons
92001639	9700-3218	8-1/2	6-5/8 API-Reg	Box	26.8	9.5
92001640	9700-3219	9-1/4	7-5/8 API-Reg	Box	29.6	9.5
92010757	9700-1806	8	6-3/4 DI-22	Pin	28.0	9.5
92010758	9700-1807	8	6-3/4 DI-22	Box	25.0	9.5
92010761	9700-1810	10	8-1/4 DI-22	Pin	37.8	17.0
92010762	9700-1811	10	8-1/4 DI-22	Box	36.7	17.0
92010759	9700-1808	11-1/4	9-1/4 DI-22	Pin	55.9	25.0
92010760	9700-1809	11-1/4	9-1/4 DI-22	Box	49.1	25.0
92010812	9700-1812	12-7/8	10-1/2 DI-22	Pin	56.7	35.0
92010813	9700-1813	12-7/8	10-1/2 DI-22	Box	76.6	35.0
92010869	9700-1828	13-1/8	10-1/8 DI-42	Pin	62.5	35.0
92010870	9700-1829	13-1/8	10-1/8 DI-42	Box	82.4	35.0

*Weight Includes Shackle

**Safe Working Load



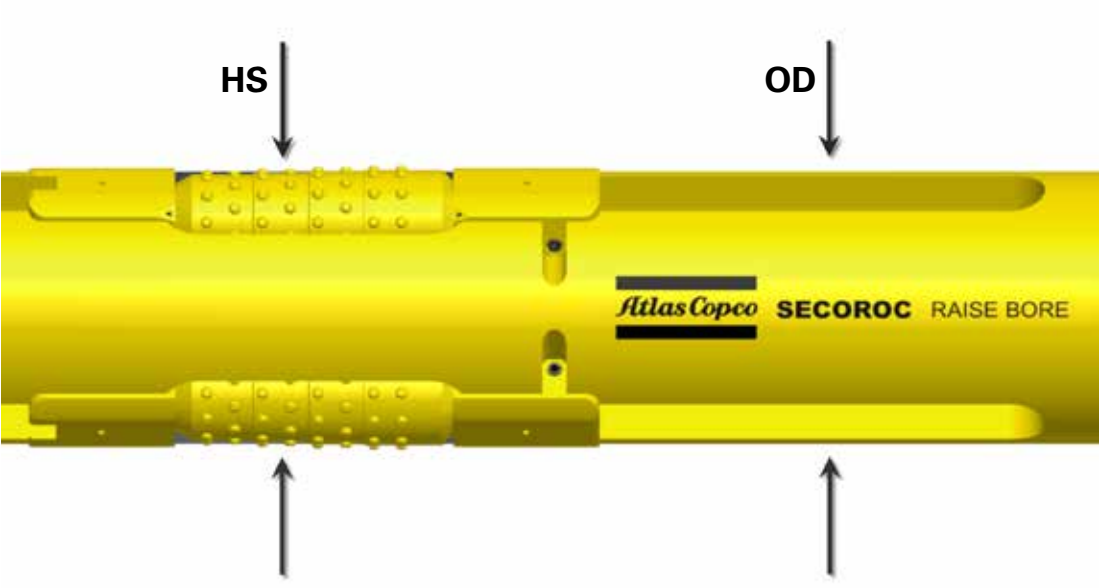
Float Valves to fit our products:

Product Number	Catalog Code	Description
92011082	9700-1849	Float Valve, 4R - Model "F"
92011083	9700-1850	Float Valve, 5F-6R - Model "F"



Roller Stabilizer Repair Kits:

Product Number	Catalog Code	OD	HS	Use with these Stabilizers
92010873	9700-1830	8	9	92010653
92010749	9700-1801	8	9	92010638 / 92010643
TBA	TBA	8	9-7/8	92010825
92010868	9700-1803	10	11	92010648 / 92010657 / 92010671
92010880	9700-1804	10	12-1/4	TBA
92010878	9700-1805	11-1/4	12-1/4	92010666 / 9201



[illegible]

COMMITTED TO SUSTAINABLE PRODUCTIVITY

We stand by our responsibilities towards our customers,
towards the environment and the people around us.
We make performance stand the test of time.
This is what we call – Sustainable Productivity

Atlas Copco Secoroc AB
Box 521, 737 25 Fagersta, Sweden Phone: +46 223 461 00
www.atlascopco.com/secoroc

Atlas Copco